

Copy Commander™ 7

Reviewer's Guide

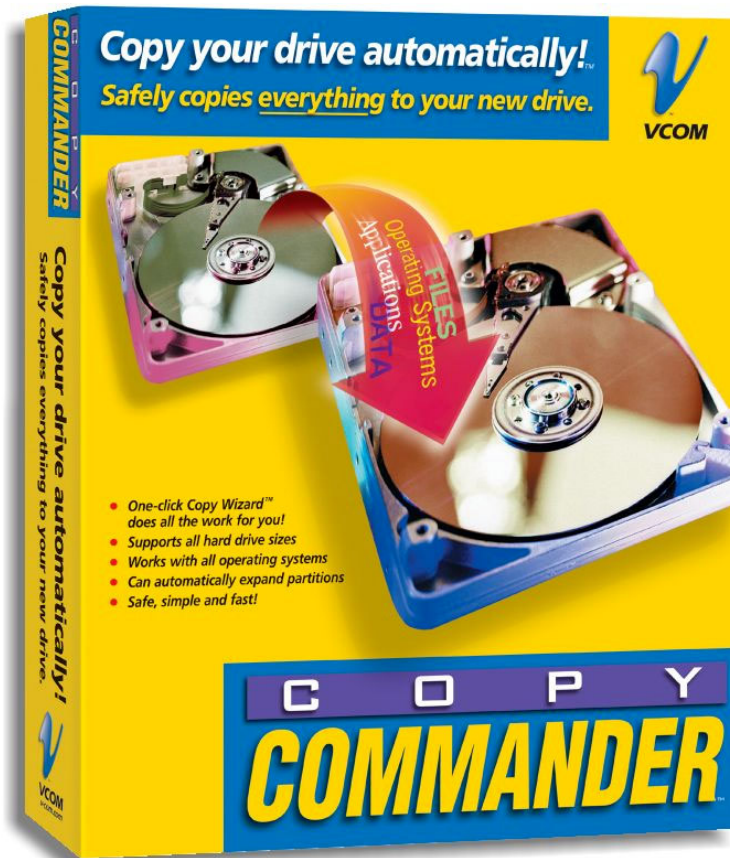


Table of Contents

Contacts.....	3
The Need	4
Overview	4
Operation	5
Putting Copy Commander through it's paces	6
Key Features.....	8
Advanced Bonus Features	8
Safety	9
Restrictions	9
The End Results	9

Contacts

Editorial Contacts:

Jeff Hyman
VP of Marketing
V Communications, Inc.
Phone: (408)-965-4000
Fax: (408) 965-4014
Email: jeff@v-com.com

General Contact Information:

V Communications, Inc.
2290 North First St., Suite 101
San Jose, CA 95131
Phone: (408)-965-4000
Fax: (408) 965-4014
Email: press@v-com.com
Web: <http://www.v-com.com>

Pricing and Availability:

Copy Commander™ 7 Estimated Street Price: \$34.95
Availability: Now at all major U.S. retailers and directly from VCOM.

VCOM Web Site Links

- Home page: <http://www.v-com.com/>
- Product page: http://www.v-com.com/product/cc_ind.html
- Quick tour: http://www.v-com.com/product/cc_gt.html
- Support page: http://www.v-com.com/support/main_copy_commander.html

The Need

When purchasing a new drive, we normally look for a faster, larger capacity drive to replace an aging drive, which is running out of space. The operating system provides no direct tool to transfer the data from one drive to another. While it can be done with many steps and utilities, it is laborious and complex, and often fails to work as expected due to missing hidden files or locked files in use by the OS. Other approaches such as reinstalling the OS and applications is very time intensive, and will still fail to transfer settings, work files, email, and downloaded updates.

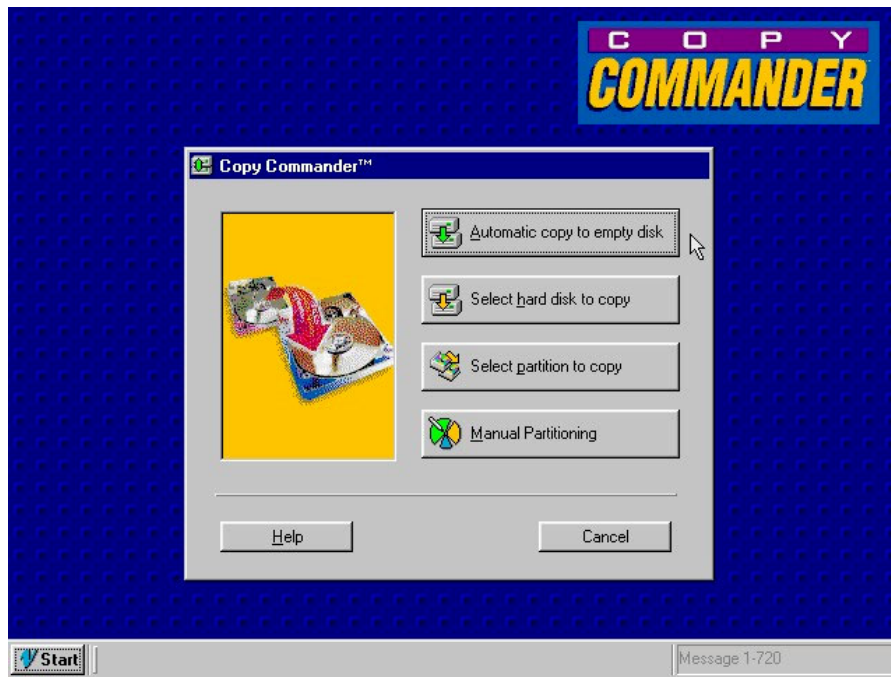
Overview

Copy Commander reliably transfers all the data from one drive to another while increasing the space to fit the new drive.

Operation

To do this reliably and independent of any OS, Copy Commander runs directly from its bootable CD or optional boot diskette. This means it works with PC based OSes including Windows 95 through XP, Linux, DOS, OS/2, Solaris, BSD and all other PC based OSes. It never alters the source drive.

When started, the Copy Wizard GUI appears with four options – Automatic copy to a blank drive, selected drive copy, selected partition copy, or manual partitioning. Most users will select the automatic copy to transfer and expand everything from an existing drive to the new drive. Automatic checks are made to ensure the new drive is blank and has enough capacity for the contents of the old drive.



Copy Commander makes the copy by creating new partitions relative to the old ones. Copy Commander handles both simple and complex environments such as users with multiple operating systems and mixed file systems such as FAT32, NTFS, Linux. With the created partitions, they are formatted and the data transferred from the old drive. Once all the data for all partitions are transferred, the partition table is updated on the new drive.

After turning off the power, the new drive can be set to be the master (i.e. jumper changes) and the old drive can be removed or used as a secondary backup drive. Additional tools are provided in Copy Commander to copy partitions and/or reformat the old drive. With the drives in the final setup, powering back up will launch your current OS from the new drive.

Putting Copy Commander through it's paces

To test out Copy Commander, you'll need a working system and a new blank drive. No changes will be made to your existing drive.

Copy Commander can be run one of three ways. Pick the way you plan to use Copy Commander before you install the new drive to save yourself a minor step (in case you need to make a diskette).

- 1) Your BIOS supports booting from the CD, and you have the Copy Commander CD.
- 2) You have a Windows boot diskette (i.e. DOS) that can see your CD ROM.
- 3) You would like to boot off a single diskette only (no CD drive required). In this case you should run Copy Commander CD under Windows and make the Copy Commander bootable diskette.

Using the Copy Commander CD or diskette are identical in operation and include all the features of Copy Commander.

Connect up the drive to the system following the drive manufacturer's instructions (generic instructions are also provided in the Copy Commander PDF manual).

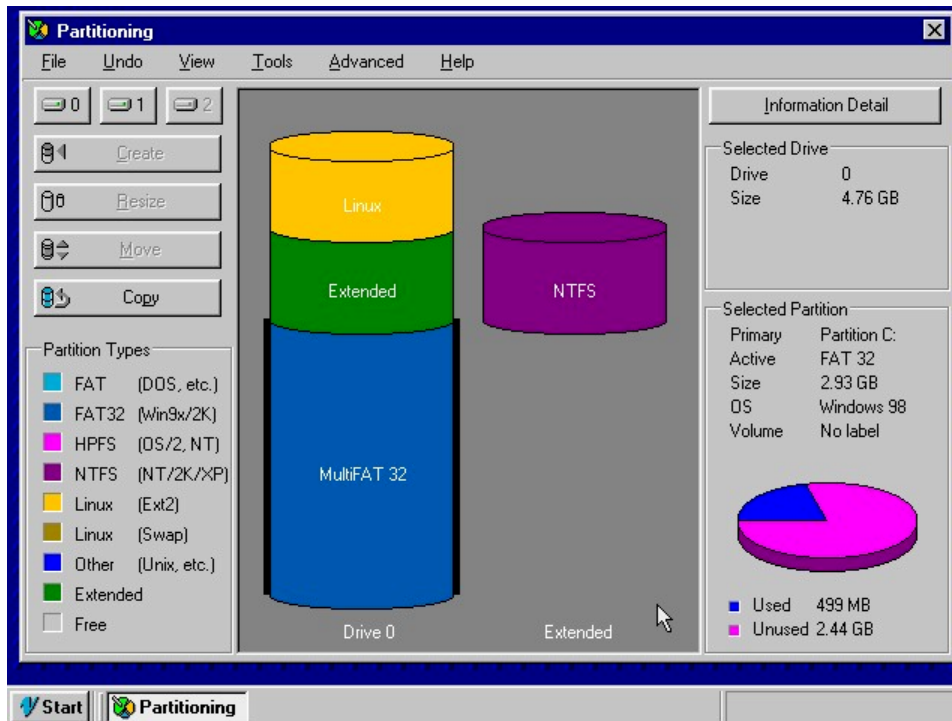
Use one of the three methods outlined above to boot into Copy Commander. Normally a user would select the first option, automatic copy, but you may wish to take a peek at the other options – selected drive copy, partition copy and manual partitioning.

Copy Wizard Option Screen



When you select the automatic copy, the copy process starts immediately. Status is provided on each step until the entire drive is copied. Depending on the amount of data, speed of your drives and PC speed, this may take several hours.

If you wish to start over and try the copy again, you can use Copy Commander's manual partitioning to delete each partitions on the new drive. Be sure you have selected the new large drive, and not your old one!



Key Features

- Only “single-click” drive copy solution
- Handles every PC based OS
- No installation required
- Expands FAT, FAT32, NTFS, and Linux Ext2 partitions if needed to larger drive
- Options to copy selected drive or partitions
- Fast copy process skips unused sectors

Advanced Bonus Features

- Includes graphical partitioning to create, copy, format, delete and more
- Copy selected partitions to the same or another drive
- Supports coping to a smaller drive and will shrink partitions (when the data will still fit).
- Includes fully automatic mode options with diskette. When set up, simply boot off a diskette to copy everything from one drive to another – no user interaction required.
- Special options control display resolution, mouse, surface scan, and other features.
- For Windows NT/2000/XP administrators, SID changing options are included
- Works with Workstations and Servers

Safety

- Copy Commander does not alter the source drive in any way. Other products may require installation and alteration of the source master boot record.
- Automatic copy will only copy to an empty drive, never to a drive with contents.
- All data is transferred, including OS files that locked and in use when the OS is running, compressed files, compressed partitions, hidden files and hidden partitions.
- In the event of a power failure or accidental reset, since the source drive is never modified, the copy process can be repeated to complete the process.
- If Windows 95A or NT is detected as the bootable OS, to keep the OS functional, the FAT16 partitions will not be expanded past 2 GB. Copy Commander will auto-convert FAT to FAT32 if necessary for expansion when the OS supports it.

Restrictions

While Copy Commander includes many features from VCOM's DriveWorks and Partition Commander products, it does not provide advanced partitioning features such as selective partition resize, move, convert, and BackStep Wizard operation undo.

Expansion of partitions is supported for the most popular file systems including FAT12, FAT16, FAT32, NTFS (NT through XP variants) and Linux Ext2. Other formats are copied 1:1 and are not expanded.

The End Results

Copy Commander is the easiest, fastest, and safest way to transfer the data from one drive to another, and does it at an incredible value.

© 2003 V Communications, Inc. All rights reserved. All products and brand names mentioned are trademarks or registered trademarks of their respective holders.